

**Central Brass Company, Inc.**  
3325 S. Garfield Ave.  
Commerce, CA 90040  
(800) 321-8630  
www.centralbrass.com

## INSTALLATION

### Tools:



Adjustable Wrench



Plumbers Putty



Teflon Tape



Rags



### Model Number: 0398 Series

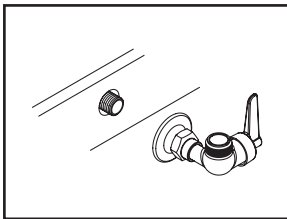
### Warnings and Notes:

Check with local plumbing code requirements before installation.  
This product should be installed by a local listed plumber.

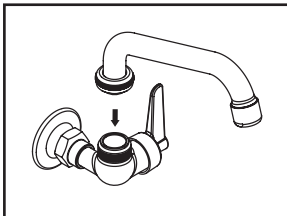
**Do not use plumbers putty on threads.**

### Installation Steps:

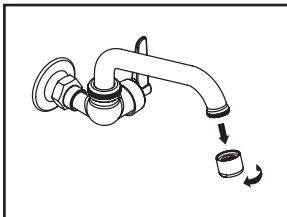
#### Pot Filler



(1) Apply Teflon tape at the threaded end of inlet pipe nipples. Tighten faucet body onto inlet pipe nipples.



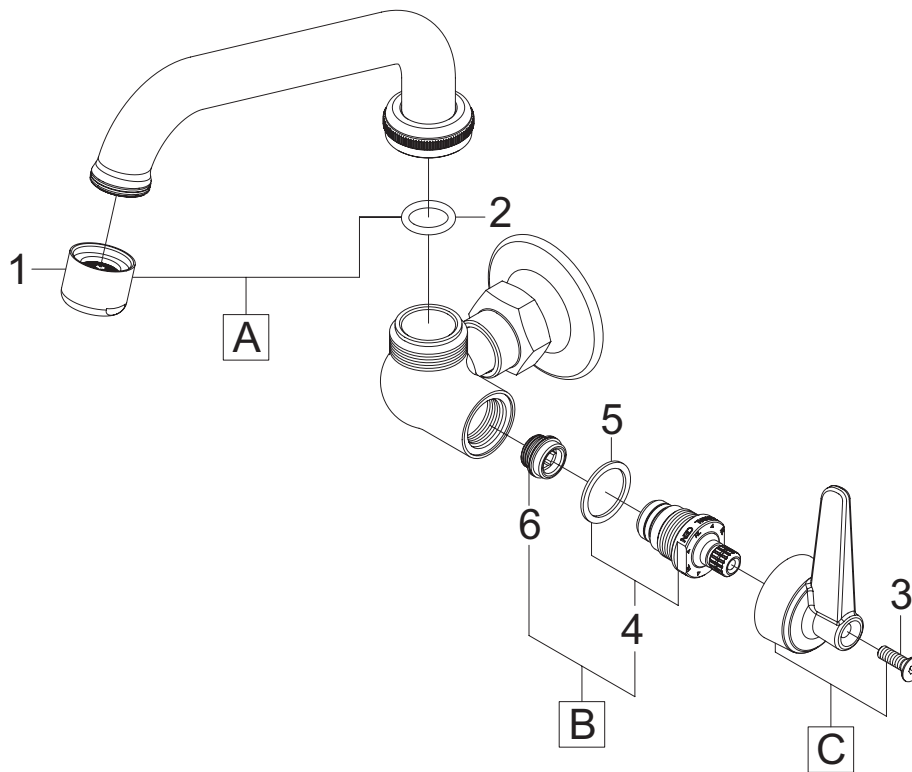
(2) Install spout to the faucet body. Make sure the spout is installed straight to avoid damaging the O-ring.



(3) Important: After installation is complete, remove aerator. Turn on main water supply. Turn on handle and allow water to run at least one minute. While water is running, check for leaks. Turn off water and replace aerator.

## Exploded Drawing:

	ITEM #	DESCRIPTION
A	SU-2924-A	6" Tube Spout with Aerator
B	K-454-H	Stem Assembly With Replaceable Seat
C	CS-19007P	Lever Handle-Plain
1	CS-49014	1.5GPM Aerator
2	X1038-KN	O-Ring Epdm Rubber (25pcs/pk)
3	XCS-49033	1/8" Handle Screw (10 pcs/pk)
4	G-454-ER	Quick Pression 1/4 Turn Stem Assembly
5	X1028-Y	Gasket (25 pcs/pk)
6	X263-BC	Replacement Seat (10 pcs/pk)



**Central Brass**  
C O M P A N Y, Inc.

For more care information or trouble shooting inquiries  
about your Central Brass product, please call:

**Central Brass Company, Inc.** (800) 321-8630  
Monday-Friday 8 AM to 8 PM EST (5 AM to 5 PM PST)

[www.centralbrass.com](http://www.centralbrass.com)