

# LENOVA

SEVEN ELEMENTS OF SINKS

4580 Roosevelt Rd.

Hillside, IL 60162

877 -733-1098

[www.lenovasinks.com](http://www.lenovasinks.com)

## **INSTALLATION INSTRUCTIONS FOR STAINLESS STEEL UNDERMOUNT SINKS**

### **Important Information**

**WARNING: Risk of personal injury. Stainless Steel Sink edges are sharp and can cause serious injuries. Use gloves and handle sink edges with caution.**

### **NOTE:**

1. Due to the nature of undermount installation, Lenova recommends that Lenova Sinkware undermount sinks be installed by professional installers.
2. The templates are only a guide. Wells strongly recommends the physical presence of the sink when countertop is cut.
3. For single bowl sinks mounted in multiple bowl configurations, a minimum distance of 2-1/4" (57 mm) is required between the bowls. Any additional required support should be determined by the countertop supplier.
4. For replacement installations, make sure the existing cutout is the same size or smaller than the cutout for the new sink.
5. The number of mounting clips included with your sinks may vary. Use all the clips provided with the sink.
6. Allow the silicone caulk to cure following the manufacturer's instructions

All information in this manual is based on the latest product information available at the time of publication. Lenova. reserves the right to make revisions in the design of products without notice.

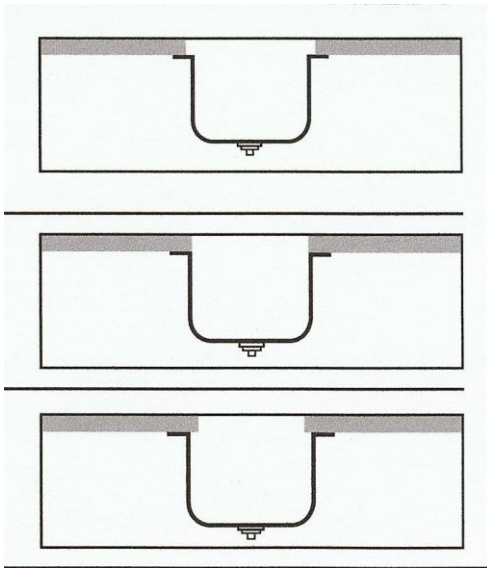
## Page 2 Undermount Installation

1. Lenova undermount sinks can be installed in three different ways in terms of the amount of reveal of the sink flange from the countertop cutout opening (see Undermount Reveal Options).

WellsSinkware.com

### Undermount Sink Options

1. Positive Reveal: The countertop edge sits back 1/8" back from the edge of the sink, exposing the sink rim
2. Zero Reveal The countertop meets the edge of the sink fitting flush with the sink bowl
3. Negative reveal The countertop extends over the edge of the sink 1/8" on all sides. Use caution to make sure all accessories such as cutting boards will fit properly.



2. Verify cabinet clearance. Use Lenova recommended cabinet size. Position template at desired location on the countertop allowing necessary space for the sink to fit into the cabinet, and enough room on the countertop for clips, faucet, and soap dispenser, etc.

3. Choose the right fastener (not provided) for the countertop material. On the underside of the countertop, about 3/4" or closer depending on the space available from the edge of sink flange, mark spots for clip locations, at flange corners and every 6" to 7" apart around the sink flange. Secure the clips at the marked locations loosely.

### **Page 3 Undermount Installation**

4. Clean the sink flange and countertop surface where the sink flange will be mounted with a solvent such as denatured alcohol. Dry thoroughly and apply a thin bead of clear silicone caulk around the top deck of sink flange.
5. Position and align sink over the countertop opening and press sink against countertop.
6. Adjust the position of sink if necessary. Make sure it is aligned to the cutout opening. Completely tighten all fasteners. Remove excess silicone caulk around the inside and outside edges of sink flange. After silicone cures, wipe inside edge with denatured alcohol. This will smooth out any rough areas.