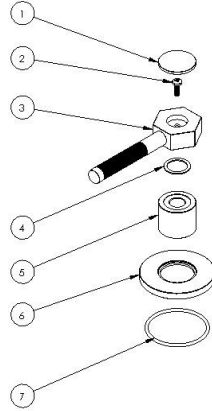
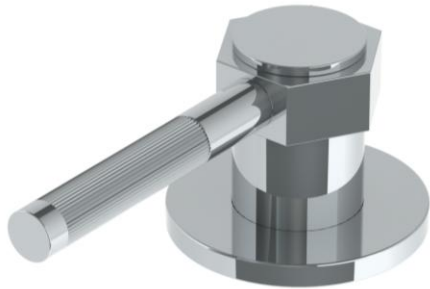
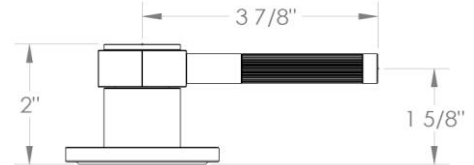


HANDLE TRIMS

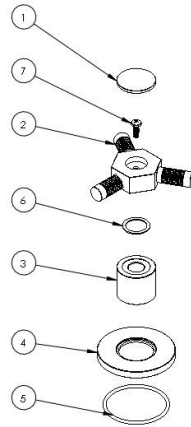
Zeze (Code: SP4)



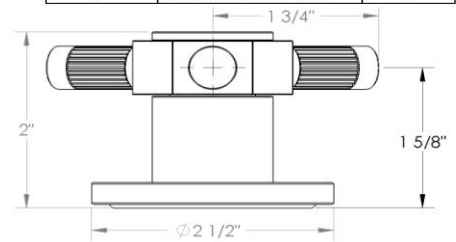
ITEM NO.	PART NUMBER	QTY.
1	SP-1.1-HNDL-CAP	1
2	pan cross head_ai	1
3	SP-1.1-HNDL	1
4	.885x.683x.034-PLSTC-WSHR	1
5	SP4-ESC	1
6	SP4-ESC-RING	1
7	AS568 - 135	1



Pisacane (Code: SP5)



ITEM NO.	PART NUMBER	QTY.
1	SP-1.1-HNDL-CAP	1
2	SP-1.1-HNDL-LVR-TOP	3
3	SP4-ESC	1
4	SP4-ESC-RING	1
5	AS568 - 135	1
6	.885x.683x.034-PLSTC-WSHR	1
7	pan cross head_ai	1



Specification from Finished Wall to Tip of Broach Stem

HANDLE TRIM #	MEASUREMENT (IN.)
SP4	2 1/8"
SP5	2 1/8"

Note: When fitting handle it may be necessary to shorten broach stem and/or threaded nipple to eliminate gap between handle and escutcheon

IMPORTANT INSTALLATION INFORMATION

- USE TEFLON TAPE OR PIPE SEALANT FOR THREADED CONNECTIONS
- DO NOT USE PLUMBER'S PUTTY ON ANY OF THE BRASS COMPONENTS
This will cause the finish to tarnish and void the warranty. A non-corrosive Alkoxy Silicone is recommended.
- DURING SWEATING OF LINES DO NOT OVERHEAT CASTING
Overheating may cause damage to internal mechanism
- COPPER ADAPTORS MAY BE REQUIRED TO COMPLETE YOUR INSTALLATION

For technical support, please call 718-257-2800